

MEDLANCE[®] plus

Safety Lancets

Product features

Comfort MAX

CE 0344

- **Safe:** single use, self-destructing. No possibility of reuse.
- **Simple:** intuitive 2 step operation. Blood sampling simpler than ever before.
- **Sterile:** needles are sterilized with Gamma irradiation.



- **Gentle:** ultra sharp needles, ideally positioned during skin penetration.
- **Tailored:** available in 5 different versions to meet specific blood sample needs and address the variety of patients' skin types.
- **Efficient:** a "technique-independent" design provides an adequate blood flow.



BOX 100ct
200ct



MEDLANCE[®] plus

Medlance[®] plus SuperLite

30G
Needle Tip
1.2 mm

Cat. No. 7241
Sales Box 200ct
Cat. No. 7242
Sales Box 100ct



Collecting blood has never been so simple! Specially designed 30G needle tip provides higher patient's comfort without compromising usability.

Medlance[®] plus Lite

25G
Needle
1.5 mm

Cat. No. 7043
Sales Box 200ct
Cat. No. 7243
Sales Box 100ct



Ideal for blood glucose monitoring purposes.

Medlance[®] plus Universal

21G
Needle

Penetration Depth
1.8 mm

Cat. No. 7044
Sales Box 200ct
Cat. No. 7244
Sales Box 100ct



Whenever you need larger blood samples for testing glucose, hemoglobin, cholesterol, blood type studies, coagulation, blood gas and many others.

Medlance[®] plus Extra

21G
Needle

Penetration Depth
2.4 mm

Cat. No. 7045
Sales Box 200ct
Cat. No. 7245
Sales Box 100ct



Patient's skin is tough? More blood is needed? Reach for Medlance[®] plus Extra and collect larger blood sample also from men and physical workers.

Medlance[®] plus Special

0.8mm
Blade

Penetration Depth
2 mm

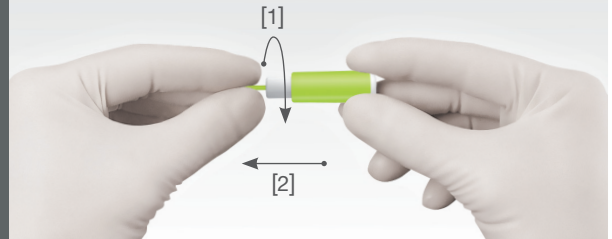
Cat. No. 7046
Sales Box 200ct
Cat. No. 7246
Sales Box 100ct



Medlance[®] plus Special is perfect for tests requiring larger blood samples. Ultra-sharp blade provides adequate blood volume.

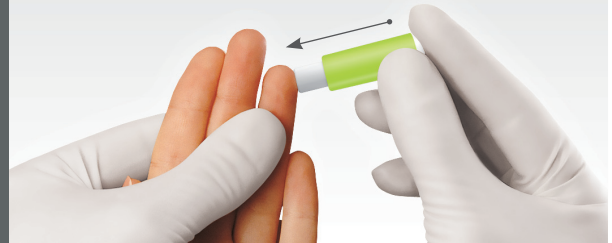
Instructions for use

1. Twist



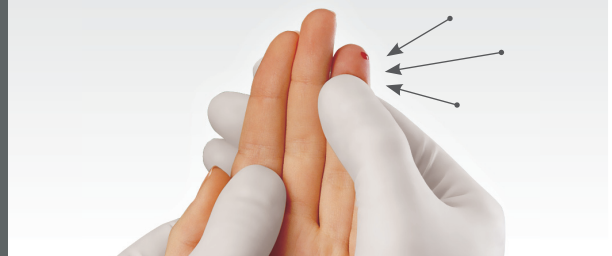
Twist off protective cap and then pull it straight out.

2. Press



Press the Medlance[®] plus body firmly against the puncture site to activate the device. Dispose of used lancets in an approved sharps container.

3. Collect



Gently apply intermittent pressure near the puncture site to obtain the required blood volume.

HTL STREFA
high tech lab

Distributed in the US by:
HTL-STREFA, Inc.
3005 Chastain Meadows Pkwy, Suite 300,
Marietta, GA 30066, USA
T: +1 770 528 0410, F: +1 770 528 0411
info@htl-strefa.com • www.htl-strefa.com

Manufactured by:
HTL-STREFA S.A.
Adamówek 7,
95-035 Ozorków, Poland
T: +48 22 587 05 72, F: +48 22 811 05 36
info@htl-strefa.pl • www.htl-strefa.pl